

*Godfrey Hirst*

F L O O R S

Timber



# Timber

For natural style and durability, look no further than Godfrey Hirst Engineered Timber floors.

From contemporary style to natural character, this impressive range of Australian and exotic species has been carefully selected to complement your home.

Each high quality engineered timber floor features distinct knots and grain variation to provide a look that is unique, authentic and inspiring.

With a 5G Insta Clic™ locking system, installation is simple. There is no need for nails or glue and your floor can be walked on straight away.

All Godfrey Hirst engineered timber floors feature a Wearguard™ coating to protect against dirt, wear and spills.



*Timber is synonymous  
with strength and durability*

Regal Oak Handcrafted - Astor  
Cover: Regal Oak Handcrafted - Dover

# Handcrafted Oak

Regal Oak Handcrafted has a distressed matte finish and round edges for a rustic look. Wide boards are also available in selected hues.

The stunning colours are smoked rather than stained to provide consistent colour all the way through the hardwood top. This helps to hide everyday wear and tear, for your peace of mind.



# Regal Oak Handcrafted

## STANDARD



Tudor



Dover



Astor



Windsor



Doulton

## WIDE BOARD<sup>^</sup>



Windsor<sup>^</sup>



Doulton<sup>^</sup>

## REGAL OAK HANDCRAFTED

### STANDARD SIZE

**Panel** 1820<sup>~</sup> x 190 x 14mm

**Box** 2.075m<sup>2</sup>

<sup>~</sup>Nested/random lengths

### <sup>^</sup>WIDE BOARD

**Panel** 2130<sup>~</sup> x 240 x 14mm

**Box** 3.067m<sup>2</sup>

<sup>~</sup>Selected colours only  
<sup>~</sup>Nested/random lengths



THICKNESS



ROUND EDGE



INSTA CLIC<sup>™</sup>



MATTE FINISH



DISTRESSED SURFACE



HEVEA CORE



WEARGUARD<sup>™</sup>

<sup>~</sup>Nested/random lengths will occur and will affect panel length and number of panels per box.

## Unique and timeless

For timeless style and authentic beauty, Oakden is the perfect timber flooring solution. It features unique grain definition and modern colour options in a sophisticated matte finish.

Be inspired by a range of beautiful colours and make a statement from the floor up with Oakden.



Vintage Taupe



Harvest



Dusk



Olive Haze



Smoke



Spice

### OAKDEN

#### STANDARD SIZE

**Panel** 1820~ x 165 x 14mm

**Box** 1.802m<sup>2</sup>

~Nested/random lengths



THICKNESS



MATTE FINISH



MICRO BEVEL



TRU-SURFACE STAIN



INSTA CLIC™



HEVEA CORE



WEARGUARD™

# Oakden

## Make a statement in your home with Naturals

The Naturals range of engineered timber flooring features hardwood species from Australia and beyond. Each style has its own unique surface features, with no two floors the same.

From the dark red browns of Jarrah to the blonde beauty of Blackbutt, Naturals offers an understated satin finish to bring traditional hardwood floors into the modern home.

### AUSTRALIAN



Blackbutt



Spotted Gum



Jarrah

### EXOTICS<sup>^</sup>



Kempas<sup>^</sup>



Merbau<sup>^</sup>



Smoked Iroko<sup>^</sup>

### NATURALS

#### AUSTRALIAN

**Panel** 1820<sup>~</sup> x 135 x 14mm

**Box** 1.474m<sup>2</sup>

<sup>~</sup>Nested/random lengths

#### <sup>^</sup>EXOTICS

**Panel** 1820<sup>~</sup> x 145 x 14mm

**Box** 1.583m<sup>2</sup>

<sup>~</sup>Nested/random lengths



THICKNESS



SQUARE EDGE



INSTA CLIC<sup>™</sup>



SATIN FINISH



HARDWOOD TOP



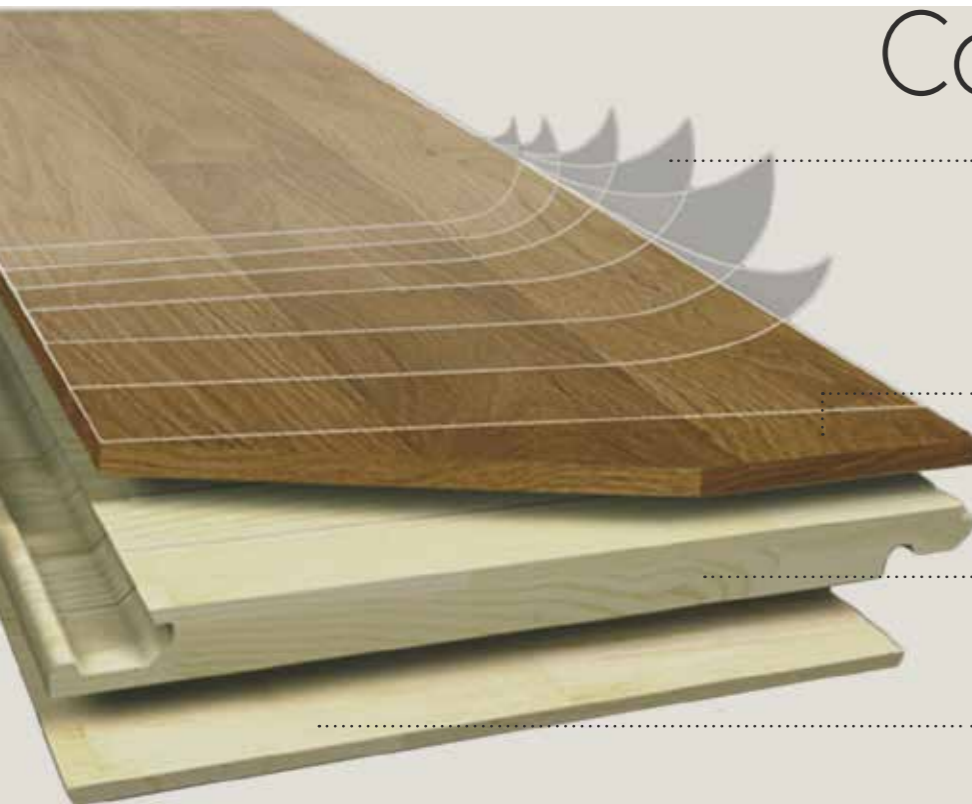
HEVEA CORE



WEARGUARD<sup>™</sup>

# Naturals

# Construction



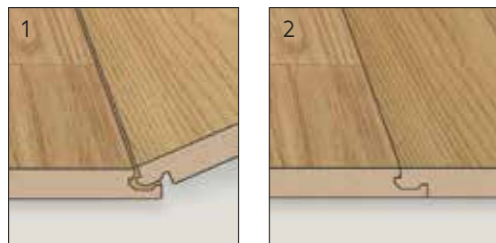
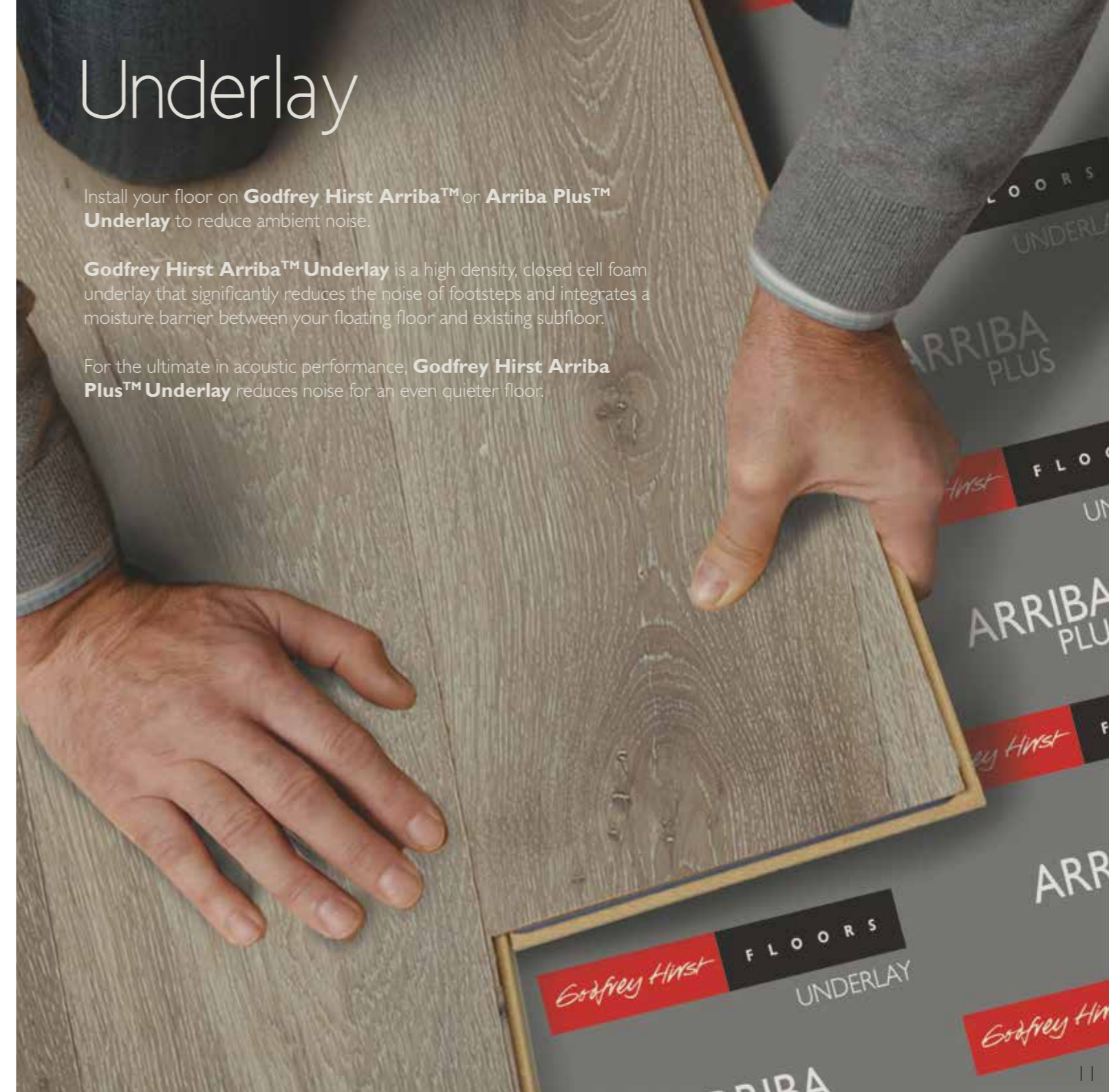
1. Wearguard™ is a hardy 7 coat surface that helps to protect your Godfrey Hirst timber floor from everyday wear and tear.
2. A hardwood top of authentic timber provides a unique look in a number of species.
3. A Hevea core (made from rubberwood) runs in the opposite direction to the hardwood top for added stability.
4. A bottom balancing layer runs in the same direction as the hardwood top, for grounding stability.

# Underlay

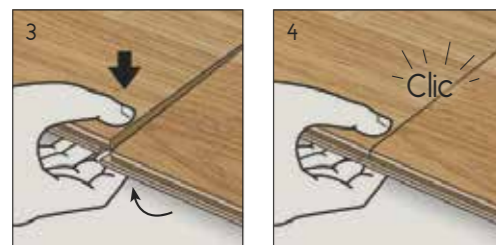
Install your floor on **Godfrey Hirst Arriba™** or **Arriba Plus™ Underlay** to reduce ambient noise.

**Godfrey Hirst Arriba™ Underlay** is a high density, closed cell foam underlay that significantly reduces the noise of footsteps and integrates a moisture barrier between your floating floor and existing subfloor.

For the ultimate in acoustic performance, **Godfrey Hirst Arriba Plus™ Underlay** reduces noise for an even quieter floor.



Long side



Short side

# 5G Insta Clic™

All Godfrey Hirst Engineered Timber floors feature the 5G Insta Clic™ system, which allows for fast, simple DIY installation.

In one single action, the boards snap and lock together with greater strength and stability.

No glue or nails are required so you can install and walk on your floor the same day.

# Product Features

The select features of Godfrey Hirst Timber floors are explained below. Look for these various feature icons on product samples in store and online:

## PROFILE



**Round edges** provide a rustic look and demonstrate careful craftsmanship.



**Micro-bevel edges** create a small V-shaped edge between boards. This outlines each board for an authentic floorboard finish.



**Square edges** create a sleek and seamless floor.

## FINISH



Boards with a **matte finish** reflect the natural look and feel of timber.

**Satin finished** boards have a silky, smooth finish with a subtle shine.

## WEARGUARD™



**Wearguard™** is a hardy 7 coat system that protects against dirt, wear and spills and makes for easy care and maintenance.

## SURFACE



The unique colours of selected ranges are achieved with **Tru-Surface Stain** technology.



**Distressed surface** boards are handcrafted to show a sought after, lived-in look.



The **hardwood top** layer of our boards is a genuine, resandable veneer of authentic timber species.

## CONSTRUCTION



**Hevea Core** is made from Rubberwood which gives each board maximum stability.



# Accessories

Our scotia, stair nosing and 3-in-1 trim ranges have been designed to 100% match the exact colour of your Godfrey Hirst Timber floor. All are pre-finished and the perfect way to complete your floor.

Our scotias are used to cover perimeter expansion gaps along skirting boards and walls, whilst stair nosing gives the finishing touch for your floor scheme. Our 3-in-1 Trim is designed to disguise expansion joins and can also be used as a ramp or end trim.



Oakden - Spice



Godfrey Hirst

F L O O R S

TIMBER

## Godfrey Hirst Contact Details:

For any information about your Godfrey Hirst floor and how to care for it, please contact:

GODFREY HIRST CUSTOMER SERVICE  
PO Box 93  
GEELONG VIC 3220

Email: [general.enquiries@godfreyhirst.com](mailto:general.enquiries@godfreyhirst.com)

Freecall: 1800 630 401

[www.godfreyhirst.com](http://www.godfreyhirst.com)

Proudly distributed by Godfrey Hirst Australia Pty Ltd  
ABN 58 000 849 758

\*Nesting/random lengths will occur and will affect panel length and number of panels per box.

Colour and grain of swatches in this brochure may vary from sample due to natural variation. Images to be used as a guide only. Colour appearance can also vary depending upon type of light under which a sample is viewed and the light sources where the flooring is installed.

Details correct at time of printing, APRIL 2015.  
Please see [www.godfreyhirst.com](http://www.godfreyhirst.com) for latest version.

AUSTRALIAN EDITION 94556 0415



Oakden - Spice